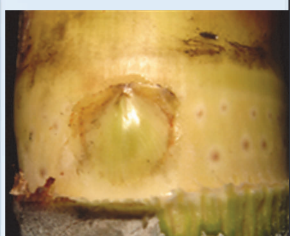


<b>Variety name</b>	<b>MANA</b>
<b>Parentage</b>	Unknown x Unknown
<b>Seedling number</b>	LF60-3917
<b>Year released</b>	1972
<b>Appearance</b>	Internodes are of uniform length, thick diameter, and brownish green in colour when unexposed and becomes brownish when exposed. The stalks of Mana generally are long and heavy.
<b>Germination</b>	Moderate (10 <sup>+</sup> days)
<b>Tillering</b>	Moderate
<b>Growth</b>	Vigorous growth in all stages
<b>Trashing</b>	Free - loosely clinging easily removed
<b>Flowering</b>	Sparsely
<b>Soil type suitability</b>	Suitable for poor-medium hilly areas not recommended for flat fertile soils
<b>Seasonal sugar</b>	Mid-late maturing
<b>Cane yield</b>	High- capable of producing 70tc/ha on poor fertility soils provided weather conditions are normal
<b>Sugar yield</b>	Moderate
<b>Resistance to extreme events</b>	Water logging - moderate cyclones – lodges but tolerates moderate wind speeds
<b>Lodging</b>	Lodges when crop is healthy & with strong winds
<b>Fiji Leaf Gall Disease</b>	Moderately susceptible
<b>Downy mildew</b>	Moderately susceptible
<b>Pest Cane weevil Borer</b>	Infestation is noted on farms particularly when farm hygiene is poor



Recommended harvesting period based on maturity						
Jun	Jul	Aug	Sep	Oct	Nov	Dec



#### Buds:

Generally small and round, embedded within the growth ring. Bud tends to swell or protrude when exposed to sunlight.

#### Growth:

Vigorous growing type during early, mid and late phase.

#### Internodes:

Medium length, medium thickness Cylindrical shaped

#### Wax:

The stalks are coated with wax. Prominent wax ring below growth ring.

#### Trashing

Trash is loosely clinging and easily de-trashed.

#### Sugar content %POCS

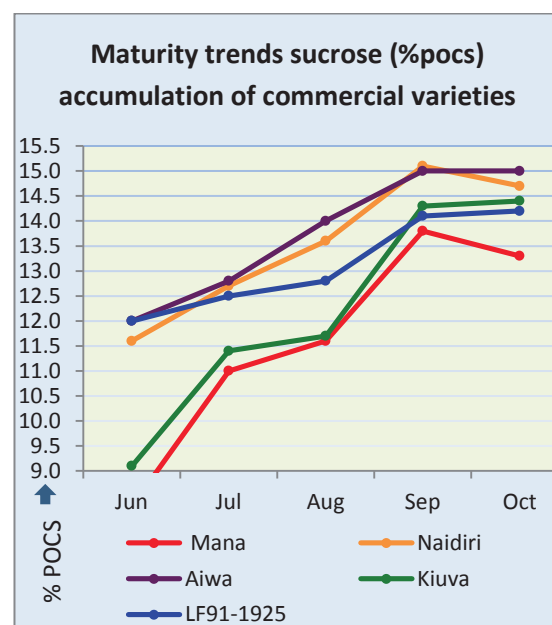
The sugar content of Mana is low at the beginning of the crushing season and rises gradually during July-August and is on par with other commercial varieties around September.

#### Maturity trend

The sugarcane starts maturing with the onset of the dry season in mid-May and picks up as the cooler temperatures

set in. Understanding the maturity of sugarcane is important in planning the harvesting schedule. Varieties that have relatively high sucrose content at the beginning of the season are often said to mature early in the season. All farms where possible should have at least 25% of farm planted with early to mid-maturing varieties

Mana is a mid to late maturing variety and should preferably be harvested from mid-August.



#### Disadvantage of Mana

Mana produces late emerging shoots (suckers) that grows vigorously and negatively impacts the sucrose content. Dense sheath hair, and susceptible to borer damage. Cane and sugar yields decline when planted on flat land due to high level of lodging.

#### Advantage of Mana

Well adapted to poor soils and slightly drought resistant.

